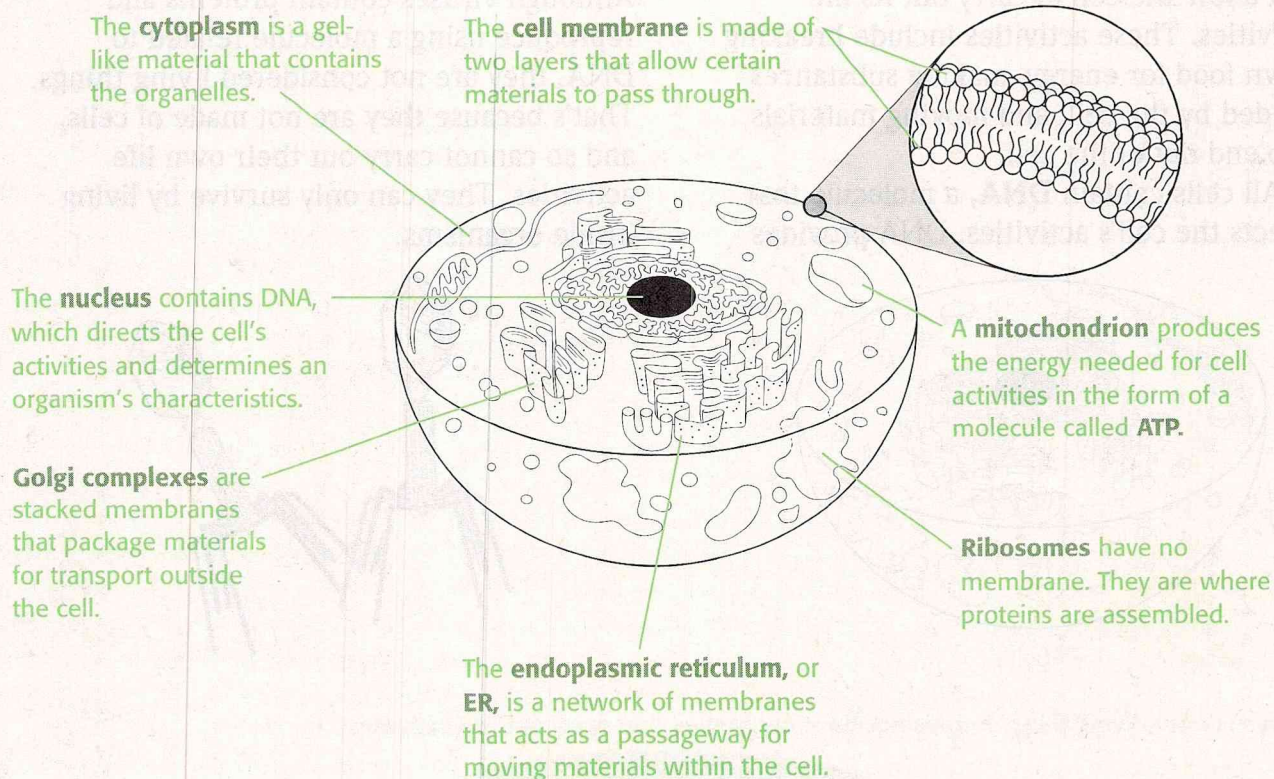


# Animal Cells

## What structures do animal cells contain?

Cells are surrounded by a **cell membrane** that holds the cell together and allows materials to pass into and out of the cell. Nutrients enter and wastes leave through the cell membrane.

Within a cell, structures called **organelles** carry out all the activities necessary for life. Like the cell, most organelles are surrounded by a membrane that allows materials to enter and leave. Each organelle has a certain function.



### Organelles in a typical animal cell

## Show What You Know

- |                                |                       |
|--------------------------------|-----------------------|
| 1. _____ nucleus               | a. protein assembly   |
| 2. _____ mitochondrion         | b. material transport |
| 3. _____ endoplasmic reticulum | c. DNA storage        |
| 4. _____ ribosome              | d. ATP production     |